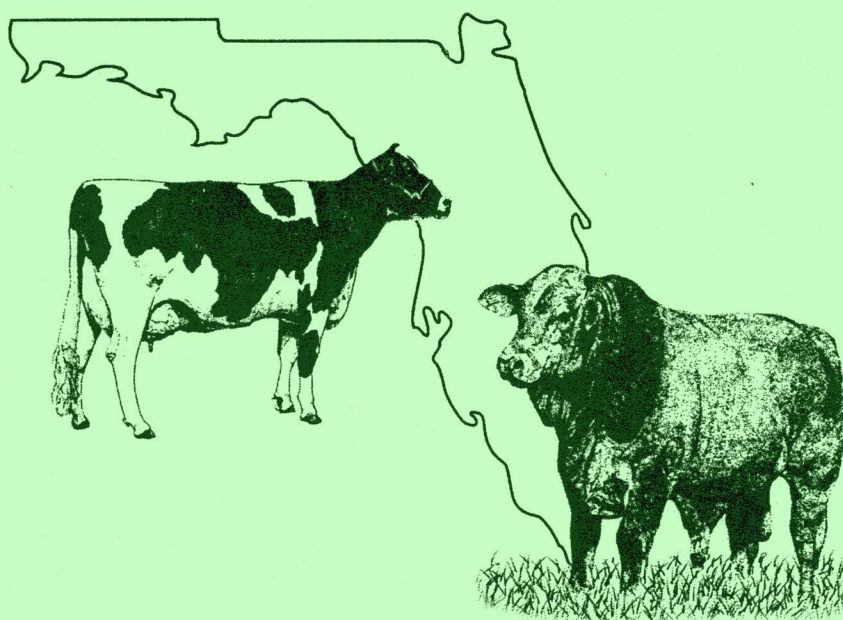


# 11th Annual Florida Ruminant Nutrition Symposium



Gainesville, Florida  
January 13-14, 2000

## PROCEEDINGS



UNIVERSITY OF  
FLORIDA

Institute of Food and Agricultural Sciences  
Dairy and Animal Science Departments

# 11<sup>th</sup> ANNUAL FLORIDA RUMINANT NUTRITION SYMPOSIUM

Best Western, Gainesville, FL

Department of Animal Science and Dairy & Poultry Sciences

University of Florida, Gainesville

**Thursday, January 13<sup>th</sup>**

10:00 am – 5:00 pm Registration

## **AFTERNOON SESSION – M. B. Hall, Presiding**

1:00 Welcome

1:20 Societal and Legislative Challenges for Animal Agriculture  
– Robert G. Zimbelman

2:00 Unsaturated Fats – The Rumen and Beyond - Charles R. Staples

2:40 Ration Management: Impacts and Consequences on Performance  
- Sandra Stokes

3:20 Refreshment Break

## **B. Haskins, Presiding**

3:40 Effects of Carbohydrate Source, Feed Additives and Feeding Systems on  
Response to Supplements for Beef Cattle Fed Forage Based Diets  
- William E. Kunkle

4:20 Planning and Conducting Successful Field Trials to Test Product Effects on  
Animal Performance - H. H. "Jack" Van Horn

**Friday, January 14<sup>th</sup>**

## **MORNING SESSION – W. Kunkle, Presiding**

8:00 Effect of Nitrogen Fertilization and Harvest Date on Forage Quality Factors and  
Protein  
Fractions - Bryan A. Reiling

8:40 Defining Mineral Requirements of the Dairy Cow – Why One Size Does Not Fit  
All – Jesse P. Goff

9:20 Optimizing Immune Competence Through Nutrition - *John Arthington*

9:50 Refreshment Break

***H. H. Van Horn, Presiding***

10:10 Physically Effective NDF and Its Use in Formulating Dairy Rations  
- *David R. Mertens*

10:50 High Starch Rations for Ruminant Production - *Gerald Huntington*

11:30 Cottonseed Hulls: Working With A Novel Fiber Source - *Mary Beth Hall*

12:10 Symposium concludes

Additional copies of these proceedings are available at \$15 per copy.  
Make checks payable to: Florida Ruminant Nutrition Symposium

Contact: Dr. Mary Beth Hall  
Dairy & Poultry Sciences  
PO Box 110920  
Gainesville, FL 32611-0920  
Tel: (352) 392-1958  
Fax: (352) 392-5595  
Email: [hall@dps.ufl.edu](mailto:hall@dps.ufl.edu)

## **University of Florida Speakers**

### **Department of Animal Science**

W. Kunkle  
B. Reiling

### **Department of Dairy & Poultry Sciences**

M. B. Hall  
H. H. Van Horn  
C. R. Staples

### **Range Cattle REC, Ona, FL**

J. Arthington

### **Guest Speakers**

J. Goff	USDA, Ames, IA
G. Huntington	North Carolina State University
D. Mertens	USDFRC, Madison, WI
S. Stokes	Texas A & M University
R. Zimbelman	FASS, Bethesda, MD

### **Planning & Program Committee**

#### **Symposium Committee**

M. B. Hall	Dairy & Poultry Sciences Department, University of Florida
B. Harris, Jr.	Harris Consulting Services
B. Haskins	Bernie Haskins Company

#### **Planning Committee**

C. Ammerman	Animal Science Department, University of Florida
D. Bates	Animal Science Department, University of Florida
J. Chapman	Technical Services Manager, Biovance Technologies
M. B. Hall	Dairy & Poultry Sciences Department, University of Florida
B. Harris, Jr.	Professor Emeritus, University of Florida
B. Haskins	Bernie Haskins Company
W. Kunkle	Animal Science Department, University of Florida
L. McDowell	Animal Science Department, University of Florida
B. Reiling	Animal Science Department, University of Florida
C. Staples	Dairy & Poultry Sciences Department, University of Florida
H. H. Van Horn	Dairy & Poultry Sciences Department, University of Florida